

## INSTALLER USER MANUAL

TIPS: Please note that only end-users can register your app account by mobile phone, installers please register by Website.

Web link2: <https://evs.livoltek-portal.com/#/> For Asia, Latin American, Australia and others  
Web link1: <https://www.livoltek-portal.com/#/> For Europe, Middle East Regions, Africa

### 1. Download APP

Download "MY LIVOLTEK" app

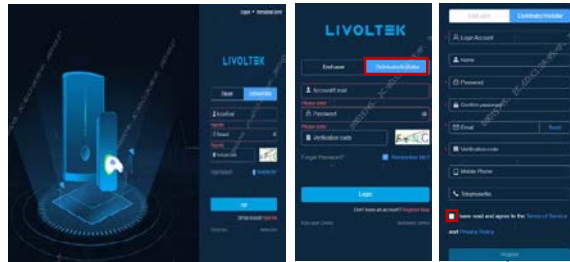
The app is available on Google Play Store(Android) and App Store(Apple)



### 2. Registration by web & Use by App

#### STEP 1

Open **URL** to register  
Tips: Installers need to register on the web, then can log into the account on the APP.



#### STEP 2

Open your app to use  
1)Put in your account and password  
2)Click the login



#### STEP 3

Successful



### 3. Create a site

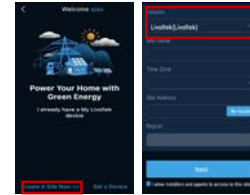
#### STEP 1

Enter your Login account and password and verification code  
Click on LOGIN



#### STEP 2

1)Click "CREATE A SITE NOW",If you are logging in for the first time  
2)Input your plant information



#### STEP 3

Choose your system type (Mandatory) and PV capacity (Mandatory)  
PV type(Optional) and PV Arrange (Optional)



#### STEP 4

Set time-of-use tariff of your site.

Tips:

Please fill in the 24-hour electricity tariffs.



#### STEP 5

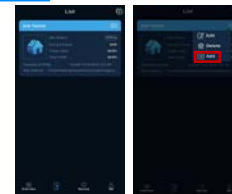
1)Choose end user's registration region  
2)Put in end user's account name in owner box



### 4. Add your device

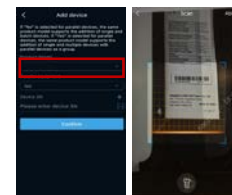
#### STEP 1

add your device  
Click Click add



#### STEP 2

Choose device model  
Click to Scan SN number on your device



#### STEP 3

Successful



### 6. Initial parameter settings by local model(Bluetooth)

#### STEP 1

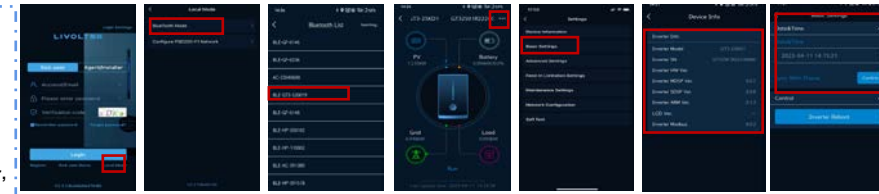
Click Local mode

#### STEP 2

Click the "BlueTooth Mode"

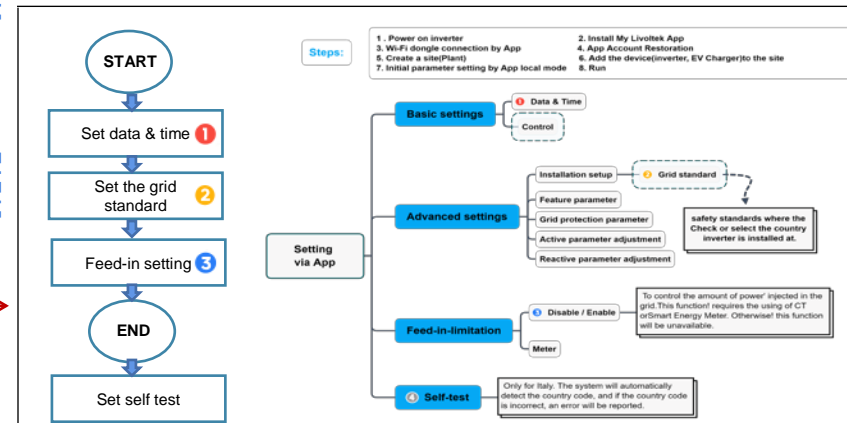
#### STEP 3

Find your Device 's SN number, and click it.



#### STEP 4

Initial parameter setting



### 7. Wi-Fi Dongle connection

STEP 1 Click Local mode to connect Wi-Fi Dongle

#### STEP 2

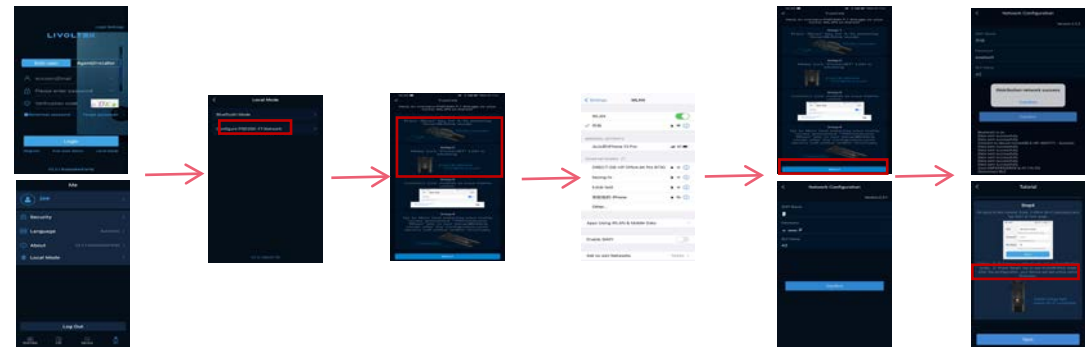
Click it

STEP 3  
1)Press "Rest" key for 3-5s entering Smart BLink mode  
2)Make sure "Power/BT" LED is blinking

STEP 4  
Connect your phone with your home wifi router

STEP 5  
1)Click "Next"  
2)Put in "Password"  
3)Click "Confirm"

STEP 6  
1)Successful  
2)Press "Reset" key (Check note2)  
3)Finished



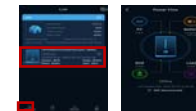
### 8. Usage details



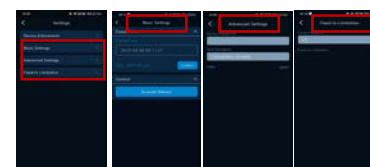
In this page, you will find daily yield, real-time power, daily revenue, total yield, total revenue and self-use ratio of all your sites.



In this page, you will find the following information about the site



In this page, you can find inverter working state. Touch the system units' icons of PV, Grid, and Load on power flow page, you can check generation details.



Parameter setting by local mode bluetooth

Parameter setting remotely on line  
In this page, you can find "Basic settings" "Advanced settings" "Feed in Limitations"

